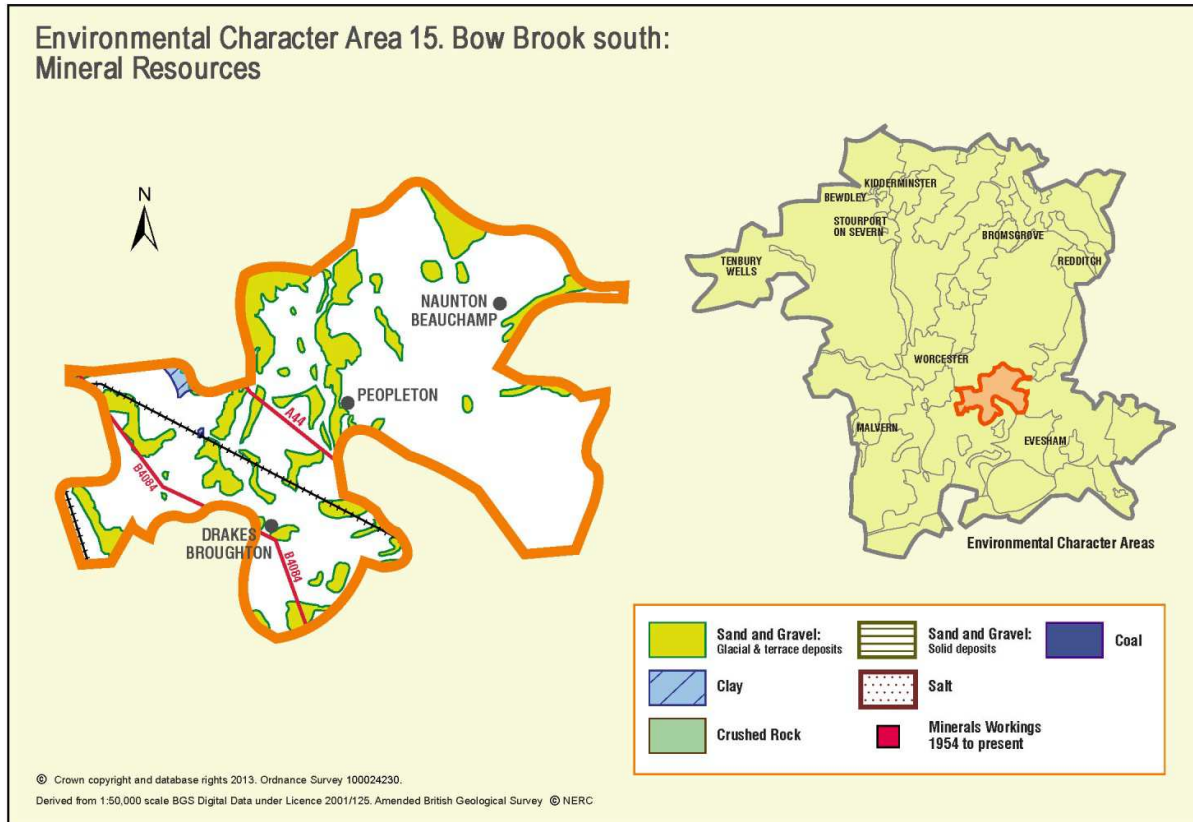


Appendix 15: Analysis of aggregate resources in ECA 15: Bow Brook South



ECA Summary for the Fourth Stage consultation on MLP (Winter 2018):

Sand and gravel

There are 17 resource areas identified for sand and gravel in Bow Brook South ECA:

- Key: 1
- Significant: 4
- Not significant: 9
- Compromised: 3

Crushed rock

There are no resource areas identified in Bow Brook South for crushed rock.

Non-aggregates

BGS data indicates that there are deposits of clay in this ECA.

Overview of resource assessment for ECA 15

Sand and gravel resource areas:

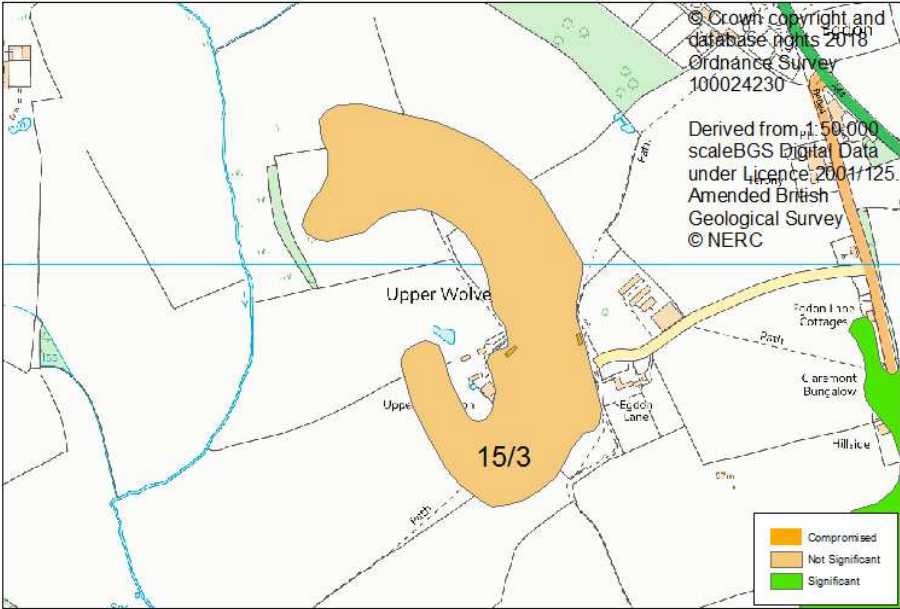
Resource number*	Second Stage Consultation		Third Stage Consultation		Fourth Stage Consultation		
	Original estimated resource tonnage (2 tonnes/m ³)	Significance	Revised estimate of resource tonnage (1.65 tonnes/m ³)	Significance	New resource number (where resource has been split)	Revised estimate of resource tonnage (1.65 tonnes/m ³)	Result
15/1	2,640,000	Key	2,178,000	Key	15/1	2,112,000	Key
					15/1b		Compromised
15/2	1,080,000	Significant	891,000	Significant	15/2	891,000	Significant
					15/2b		Compromised
15/3	220,000	Not significant	181,500	Not significant	Not reassessed		
15/4	1,840,000	Significant	1,518,000	Significant	15/4	1,452,000	Significant
					15/4b		Compromised
15/5	380,000	Not significant	313,500	Not significant	Not reassessed		
15/6	1,620,000	Significant	1,336,500	Significant		1,336,500	Significant
15/7	200,000	Not significant	165,000	Not significant	Not reassessed		
15/8	220,000	Not significant	181,500	Not significant			
15/9	280,000	Not significant	231,000	Not significant			
15/10	240,000	Not significant	198,000	Not significant			
15/11	370,000	Not significant	305,250	Not significant			
15/12	280,000	Not significant	231,000	Not significant			
15/13	992,000	Significant	818,400	Significant		818,400	Significant
15/14	403,000	Not significant	332,475	Not significant	Not reassessed		

Overview	
Resource number:	15/1
Resource name:	White Ladies Aston
Resource area:	132 ha
Resource depth:	Estimated 2m
Location	
OS sheet reference:	SO 95 SW
National grid ref:	392241, 252412
Resource description:	
Resource description:	<p>4th terrace (Ailstone) sand and gravel. The BGS memoir states that there is a suite of five terraces in the valley of the Bow Brook. The Bow Brook is part of the River Avon drainage basin and the two sets of terraces (Bow Brook and Avon) are correlated. The deposits are all predominantly pebbly sand, the pebbles mainly being derived from the Kidderminster formation, together with a few local Penarth group and Jurassic lithologies. All of the Bow Brook terrace deposits are estimated to be up to 2m thick.</p> <p>There is no more detailed local information on depths available. (Estimated resource depth based on BGS memoir estimate of 2m)</p>
Assessment of resource for the second consultation on MLP (Autumn 2013)	
Commentary:	A medium-sized deposit with small-scale dispersed development across the resource area, including the hamlet of White Ladies Aston.
Crude estimate of resource:	<p>Area: 132 ha x average depth: 2m / 2 Estimated resource volume: 1,320,000m³. Estimated resource tonnage (at 2 t/m³): 2,640,000 tonnes</p>
Conclusion:	<p>Significant – key resource. Use to define areas of search.</p>
Assessment of resource for the Third Stage consultation on MLP (Spring 2015)	
Revised estimate of resource:	<p>Area: 132 ha x average depth: 2m / 2 Estimated resource volume: 1,320,000m³ Estimated resource tonnage (at 1.65 t/m³): 2,178,000 tonnes</p>
Conclusion:	Significant.

Assessment of resource for the Fourth Stage consultation on MLP (August 2018)			
This resource area has been split into areas 15/1 and 15/1b.			
Resource area 15/1		Resource area 15/1b	
Resource area:	128 ha	Commentary:	Screened out due to the following appendix A criterion: <ul style="list-style-type: none"> - Listed Buildings - Settlement boundary
Resource depth:	Estimated 2m		
Revised estimate of resource:	Area: 128 ha x average depth: 2m ÷ 2 Estimated resource volume: 1,280,000m ³ Estimated resource tonnage (at 1.65 t/m³): 2,112,000 tonnes		
Conclusion:	Key resource	Conclusion:	Compromised

Overview	
Resource number:	15/2
Resource name:	Windmill Hill
Resource area:	54ha
Resource depth:	Estimated 2m
Location	
OS sheet reference:	SO 95 SW, SO 94 NW
National grid ref:	391741, 249816
Resource description:	
Resource description:	<p>4th terrace (Ailstone) sand and gravel. The BGS memoir states that there is a suite of five terraces in the valley of the Bow Brook. The Bow Brook is part of the River Avon drainage basin and the two sets of terraces (Bow Brook and Avon) are correlated. The deposits are all predominantly pebbly sand, the pebbles mainly being derived from the Kidderminster formation, together with a few local Penarth group and Jurassic lithologies. All of the Bow Brook terrace deposits are estimated to be up to 2m thick.</p> <p>There is no more detailed local information on depths available. (Estimated resource depth based on BGS memoir estimate of 2m)</p>
Assessment of resource for the second consultation on MLP (Autumn 2013)	
Commentary:	A medium-sized deposit bisected by a railway line, with a small-scale settlement in the south of the resource area and other dispersed development.
Crude estimate of resource:	<p>Area: 54 ha x average depth: 2m / 2</p> <p>Estimated resource volume: 540,000m³</p> <p>Estimated resource tonnage (at 2 t/m³): 1,080,000 tonnes</p>
Conclusion:	<p>Significant.</p> <p>Consider in defining areas of search.</p>
Assessment of resource for the Third Stage consultation on MLP (Spring 2015)	
Revised estimate of resource:	<p>Area: 54 ha x average depth: 2m / 2</p> <p>Estimated resource volume: 540,000m³</p> <p>Estimated resource tonnage (at 1.65 t/m³): 891,000 tonnes</p>
Conclusion:	Significant.

Assessment of resource for the Fourth Stage consultation on MLP (August 2018)			
This resource area has been split into areas 15/2 and 15/2b.			
Resource area 15/2		Resource area 15/2b	
Resource area:	54 ha	Commentary:	Screened out due to the following appendix A criterion: - Listed Buildings
Resource depth:	Estimated 2m		
Revised estimate of resource:	Area: 54 ha x average depth: 2m / 2 Estimated resource volume: 540,000m ³ Estimated resource tonnage (at 1.65 t/m³): 891,000 tonnes		
Conclusion:	Significant resource	Conclusion:	Compromised

Overview	
Resource number:	15/3
Resource name:	Upper Wolverton
Resource area:	11 ha
Resource depth:	Estimated 2m
Location	
OS sheet reference:	SO 95 SW
National grid ref:	391289, 250961
	
Resource description:	
Resource description:	Glaciofluvial deposit, mainly red-brown sand and sandy clay. Deposits to the north (in the Oddingley / Tibberton area) are recorded in the BGS memoirs as about 2m thick. (Estimated resource depth based on BGS memoir estimate of 2m)
Assessment of resource for the second consultation on MLP (Autumn 2013)	
Commentary:	A small resource area with little built development.
Crude estimate of resource:	Area: 11 ha x average depth: 2m x 0.5 Estimated resource volume: 110,000m ³ . Estimated resource tonnage (at 2 t/m³): 220,000 tonnes
Conclusion:	Not significant: Small deposit with less than 300,000m ³ . Not for consideration in defining areas of search.
Assessment of resource for the Third Stage consultation on MLP (Spring 2015)	
Revised estimate of resource:	Area: 11 ha x average depth: 2m x 0.5 Estimated resource volume: 110,000m ³ . Estimated resource tonnage (at 1.65 t/m³): 181,500 tonnes
Conclusion:	Not significant.
Assessment of resource for the Fourth Stage consultation on MLP (August 2018)	
Not reassessed due to resource not being classified as Key or Significant in the Third Stage Consultation	

Overview	
Resource number:	15/4
Resource name:	East of the Bow Brook
Resource area:	92 ha
Resource depth:	Estimated 2m
Location	
OS sheet reference:	SO 95 SW, SO 94 NW
National grid ref:	393684, 251585
Resource description:	
Resource description:	2 nd terrace (Wasperton) sand and gravel. The BGS memoir states that there is a suite of five terraces in the valley of the Bow Brook. The Bow Brook is part of the River Avon drainage basin and the two sets of terraces (Bow Brook and Avon) are correlated. The deposits are all predominantly pebbly sand, the pebbles mainly being derived from the Kidderminster formation, together with a few local Penarth group and Jurassic lithologies. All of the Bow Brook terrace deposits are estimated to be up to 2m thick. There is no more detailed local information on depths available. (Estimated resource depth based on BGS memoir estimate of 2m)
Assessment of resource for the second consultation on MLP (Autumn 2013)	
Commentary:	A medium-sized deposit with part of the village of Peopleton towards the southern end of the resource area and small-scale dispersed development across the resource area.
Crude estimate of resource:	Area: 92 ha x average depth: 2m / 2 Estimated resource volume: 920,000m ³ . Estimated resource tonnage (at 2 t/m³): 1,840,000 tonnes
Conclusion:	Significant. Consider in defining areas of search.
Assessment of resource for the Third Stage consultation on MLP (Spring 2015)	
Revised estimate of resource:	Area: 92 ha x average depth: 2m / 2 Estimated resource volume: 920,000m ³ . Estimated resource tonnage (at 1.65 t/m³): 1,518,000 tonnes
Conclusion:	Significant.

Assessment of resource for the Fourth Stage consultation on MLP (August 2018)			
This resource area has been split into areas 15/4 and 15/4b.			
Resource area 15/4		Resource area 15/4b	
Resource area:	88 ha	Commentary:	Screened out due to the following appendix A criterion: <ul style="list-style-type: none"> - Conservation Area - Listed Buildings - Settlement boundary
Resource depth:	Estimated 2m		
Revised estimate of resource:	Area: 88 ha x average depth: 2m ÷ 2 Estimated resource volume: 880,000 m ³ Estimated resource tonnage (at 1.65 t/m³): 1,452,000 tonnes		
Conclusion:	Significant resource	Conclusion:	Compromised

Overview	
Resource number:	15/5
Resource name:	Wolverton Farm
Resource area:	19ha
Resource depth:	Estimated 2m
Location	
OS sheet reference:	SO 95 SW
National grid ref:	393121, 250536
Resource description:	
Resource description:	<p>2nd terrace (Wasperton) sand and gravel. The BGS memoir states that there is a suite of five terraces in the valley of the Bow Brook. The Bow Brook is part of the River Avon drainage basin and the two sets of terraces (Bow Brook and Avon) are correlated. The deposits are all predominantly pebbly sand, the pebbles mainly being derived from the Kidderminster formation, together with a few local Penarth group and Jurassic lithologies. All of the Bow Brook terrace deposits are estimated to be up to 2m thick. There is no more detailed local information on depths available. (Estimated resource depth based on BGS memoir estimate of 2m)</p>
Assessment of resource for the second consultation on MLP (Autumn 2013)	
Commentary:	A small deposit with small-scale development in the western half of the resource area.
Crude estimate of resource:	<p>Area: 19 ha x average depth: 2m x 0.5 Estimated resource volume: 190,000m³ Estimated resource tonnage (at 2 t/m³): 380,000 tonnes</p>
Conclusion:	<p>Not significant: Small deposit with less than 300,000m³. Not for consideration in defining areas of search.</p>
Assessment of resource for the Third Stage consultation on MLP (Spring 2015)	
Revised estimate of resource:	<p>Area: 19 ha x average depth: 2m x 0.5 Estimated resource volume: 190,000m³ Estimated resource tonnage (at 1.65 t/m³): 313,500 tonnes</p>
Conclusion:	Not significant.

Assessment of resource for the Fourth Stage consultation on MLP (August 2018)

Not reassessed due to resource not being classified as Key or Significant in the Third Stage Consultation

Overview	
Resource number:	15/6
Resource name:	Frog Hall Farm
Resource area:	81 ha
Resource depth:	Estimated 2m
Location	
OS sheet reference:	SO 95 SE
National grid ref:	395613, 253656
Resource description:	
Resource description:	<p>1st terrace (Bretford) sand and gravel. The BGS memoir states that there is a suite of five terraces in the valley of the Bow Brook. The Bow Brook is part of the River Avon drainage basin and the two sets of terraces (Bow Brook and Avon) are correlated. The deposits are all predominantly pebbly sand, the pebbles mainly being derived from the Kidderminster formation, together with a few local Penarth group and Jurassic lithologies. All of the Bow Brook terrace deposits are estimated to be up to 2m thick. There is no more detailed local information on depths available. (Estimated resource depth based on BGS memoir estimate of 2m)</p>
Assessment of resource for the second consultation on MLP (Autumn 2013)	
Commentary:	A medium-sized deposit with small-scale dispersed development across the resource area.
Crude estimate of resource:	<p>Area: 81 ha x average depth: 2m / 2 Estimated resource volume: 810,000m³ Estimated resource tonnage (at 2 t/m³): 1,620,000 tonnes</p>
Conclusion:	<p>Significant. Consider in defining areas of search.</p>
Assessment of resource for the Third Stage consultation on MLP (Spring 2015)	
Revised estimate of	Area: 81 ha x average depth: 2m / 2

resource:	Estimated resource volume: 810,000m ³ Estimated resource tonnage (at 1.65 t/m³): 1,336,500 tonnes
Conclusion:	Significant.
Assessment of resource for the Fourth Stage consultation on MLP (August 2018)	
Resource area:	81 ha
Resource depth:	Estimated 2m
Revised estimate of resource:	Area: 81 ha x average depth: 2m / 2 Estimated resource volume: 810,000m ³ Estimated resource tonnage (at 2 t/m³): 1,620,000 tonnes
Conclusion:	Significant resource

Overview		<p>© Crown copyright and database rights 2015/6 Ordnance Survey 100024230</p> <p>Derived from 1:50,000 scale BGS Digital Data under Licence 2001/125. Amended British Geological Survey © NERC</p> <p>15/7</p> <p>Not Significant Significant</p>
Resource number:	15/7	
Resource name:	South of Cowsden	
Resource area:	10 ha	
Resource depth:	Estimated 2m	
Location		
OS sheet reference:	SO 95 SW, SO 95 SE	
National grid ref:	295233, 252730	
Resource description:		
Resource description:	<p>1st terrace (Bretford) sand and gravel. The BGS memoir states that there is a suite of five terraces in the valley of the Bow Brook. The Bow Brook is part of the River Avon drainage basin and the two sets of terraces (Bow Brook and Avon) are correlated. The deposits are all predominantly pebbly sand, the pebbles mainly being derived from the Kidderminster formation, together with a few local Penarth group and Jurassic lithologies. All of the Bow Brook terrace deposits are estimated to be up to 2m thick. There is no more detailed local information on depths available. (Estimated resource depth based on BGS memoir estimate of 2m)</p>	
Assessment of resource for the second consultation on MLP (Autumn 2013)		
Commentary:	A small deposit with no built development in the resource area.	
Crude estimate of resource:	Area: 10 ha x average depth: 2m / 2 Estimated resource volume: 100,000m ³ Estimated resource tonnage (at 2 t/m³): 200,000 tonnes	
Conclusion:	Not significant: Small deposit with less than 300,000m ³ . Not for consideration in defining areas of search.	
Assessment of resource for the Third Stage consultation on MLP (Spring 2015)		
Revised estimate of resource:	Area: 10 ha x average depth: 2m / 2 Estimated resource volume: 100,000m ³ Estimated resource tonnage (at 1.65 t/m³): 165,000 tonnes	
Conclusion:	Not significant.	

Assessment of resource for the Fourth Stage consultation on MLP (August 2018)

Not reassessed due to resource not being classified as Key or Significant in the Third Stage Consultation

Overview		
Resource number:	15/8	
Resource name:	Springfield Farm	
Resource area:	11 ha	
Resource depth:	Estimated 2m	
Location		
OS sheet reference:	SO 95 SW	
National grid ref:	394526, 251670	
Resource description:		
Resource description:	<p>4th terrace (Ailstone) sand and gravel. The BGS memoir states that there is a suite of five terraces in the valley of the Bow Brook. The Bow Brook is part of the River Avon drainage basin and the two sets of terraces (Bow Brook and Avon) are correlated. The deposits are all predominantly pebbly sand, the pebbles mainly being derived from the Kidderminster formation, together with a few local Penarth group and Jurassic lithologies. All of the Bow Brook terrace deposits are estimated to be up to 2m thick. There is no more detailed local information on depths available. (Estimated resource depth based on BGS memoir estimate of 2m)</p>	
Assessment of resource for the second consultation on MLP (Autumn 2013)		
Commentary:	A small deposit with no built development in the resource area.	
Crude estimate of resource:	Area: 11ha x average depth: 2m x 0.5 Estimated resource: 110,000m ³ Estimated resource tonnage (at 2 t/m³): 220,000 tonnes	
Conclusion:	Not significant: Small deposit with less than 300,000m ³ . Not for consideration in defining areas of search.	
Assessment of resource for the Third Stage consultation on MLP (Spring 2015)		

Revised estimate of resource:	Area: 11ha x average depth: 2m x 0.5 Estimated resource: 110,000m ³ Estimated resource tonnage (at 1.65 t/m³): 181,500 tonnes
Conclusion:	Not significant.
Assessment of resource for the Fourth Stage consultation on MLP (August 2018)	
Not reassessed due to resource not being classified as Key or Significant in the Third Stage Consultation	

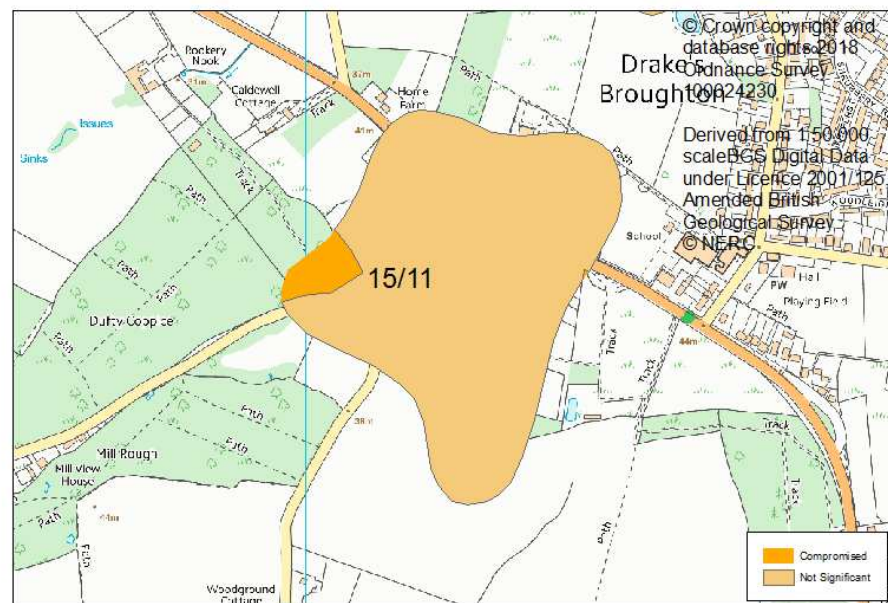
Overview	
Resource number:	15/9
Resource name:	Breach Farm
Resource area:	14ha
Resource depth:	Estimated 2m
Location	
OS sheet reference:	SO 95 SW
National grid ref:	<from GIS>
Resource description:	
Resource description:	3 rd terrace (New Inn) sand and gravel. The BGS memoir states that there is a suite of five terraces in the valley of the Bow Brook. The Bow Brook is part of the River Avon drainage basin and the two sets of terraces (Bow Brook and Avon) are correlated. The deposits are all predominantly pebbly sand, the pebbles mainly being derived from the Kidderminster formation, together with a few local Penarth group and Jurassic lithologies. All of the Bow Brook terrace deposits are estimated to be up to 2m thick. There is no more detailed local information on depths available. (Estimated resource depth based on BGS memoir estimate of 2m)
Assessment of resource for the second consultation on MLP (Autumn 2013)	
Commentary:	A small deposit with small-scale dispersed development across the resource area.
Crude estimate of resource:	Area: 14ha x average depth: 2m / 2 Estimated resource volume: 140,000m ³

	Estimated resource tonnage (at 2 t/m³): 280,000 tonnes
Conclusion:	Not significant: Small deposit with less than 300,000m ³ . Not for consideration in defining areas of search.
Assessment of resource for the Third Stage consultation on MLP (Spring 2015)	
Revised estimate of resource:	Area: 14ha x average depth: 2m / 2 Estimated resource volume: 140,000m ³ Estimated resource tonnage (at 1.65 t/m³): 231,000 tonnes
Conclusion:	Not significant.
Assessment of resource for the Fourth Stage consultation on MLP (August 2018)	
Not reassessed due to resource not being classified as Key or Significant in the Third Stage Consultation	

Overview	
Resource number:	15/10
Resource name:	Hazel Farm
Resource area:	12ha
Resource depth:	Estimated 2m
Location	
OS sheet reference:	SO 94 NW
National grid ref:	392316, 249272
Resource description:	
Resource description:	3 rd terrace (New Inn) sand and gravel. The BGS memoir states that there is a suite of five terraces in the valley of the Bow Brook. The Bow Brook is part of the River Avon drainage basin and the two sets of terraces (Bow Brook and Avon) are correlated. The deposits are all predominantly pebbly sand, the pebbles mainly being derived from the Kidderminster formation, together with a few local Penarth group and Jurassic lithologies. All of the Bow Brook terrace deposits are estimated to be up to 2m thick. There is no more detailed local information on depths available. (Estimated resource depth based on BGS memoir estimate of 2m)
Assessment of resource for the second consultation on MLP (Autumn 2013)	

Commentary:	A small deposit with a railway line at the northern end but no built development in the southern portion of the resource area.
Crude estimate of resource:	Area: 12ha x average depth: 2m / 2 Estimated resource volume: 120,000m ³ Estimated resource tonnage (at 2 t/m³): 240,000 tonnes
Conclusion:	Not significant: Small deposit with less than 300,000m ³ . Not for consideration in defining areas of search.
Assessment of resource for the Third Stage consultation on MLP (Spring 2015)	
Revised estimate of resource:	Area: 12ha x average depth: 2m / 2 Estimated resource volume: 120,000m ³ Estimated resource tonnage (at 1.65 t/m³): 198,000 tonnes
Conclusion:	Not significant.
Assessment of resource for the Fourth Stage consultation on MLP (August 2018)	
Not reassessed due to resource not being classified as Key or Significant in the Third Stage Consultation	

Overview	
Resource number:	15/11
Resource name:	Mill Lane
Resource area:	17ha
Resource depth:	Estimated 2m
Location	
OS sheet reference:	SO 94 NW
National grid ref:	392232, 248449



Resource description:	
Resource description:	4 th terrace (Ailstone) sand and gravel. The BGS memoir states that there is a suite of five terraces in the valley of the Bow Brook. The Bow Brook is part of the River Avon drainage basin and the two sets of terraces (Bow Brook and Avon) are correlated. The deposits are all predominantly pebbly sand, the pebbles mainly being

	derived from the Kidderminster formation, together with a few local Penarth group and Jurassic lithologies. All of the Bow Brook terrace deposits are estimated to be up to 2m thick. There is no more detailed local information on depths available. (Estimated resource depth based on BGS memoir estimate of 2m)
Assessment of resource for the second consultation on MLP (Autumn 2013)	
Commentary:	A small deposit with development across the centre of the resource area.
Crude estimate of resource:	Area: 17ha x average depth: 2m x 0.5 Estimated resource volume: 170,000m ³ Estimated resource tonnage (at 2 t/m³): 370,000 tonnes
Conclusion:	Not significant: Small deposit with less than 300,000m ³ . Not for consideration in defining areas of search.
Assessment of resource for the Third Stage consultation on MLP (Spring 2015)	
Revised estimate of resource:	Area: 17ha x average depth: 2m x 0.5 Estimated resource volume: 170,000m ³ Estimated resource tonnage (at 1.65 t/m³): 305,250 tonnes
Conclusion:	Not significant.
Assessment of resource for the Fourth Stage consultation on MLP (August 2018)	
Not reassessed due to resource not being classified as Key or Significant in the Third Stage Consultation	

Overview		<p>© Crown copyright and database rights 2018 Ordnance Survey 100024230</p> <p>Derived from 1:50,000 scale BGS Digital Data under Licence 2001/125. Amended British Geological Survey © NERC</p> <p>15/12</p> <p>Path</p> <p>Track</p> <p>Track</p> <p>Not Significant</p>
Resource number:	15/12	
Resource name:	East of Drakes Broughton	
Resource area:	14ha	
Resource depth:	Estimated 2m	
Location		
OS sheet reference:	SO 94 NW	
National grid ref:	393635, 248771	

Resource description:	
Resource description:	2 nd terrace (Wasperton) sand and gravel. The BGS memoir states that there is a suite of five terraces in the valley of the Bow Brook. The Bow Brook is part of the River Avon drainage basin and the two sets of terraces (Bow Brook and Avon) are correlated. The deposits are all predominantly pebbly sand, the pebbles mainly being derived from the Kidderminster formation, together with a few local Penarth group and Jurassic lithologies. All of the Bow Brook terrace deposits are estimated to be up to 2m thick. There is no more detailed local information on depths available. (Estimated resource depth based on BGS memoir estimate of 2m)
Assessment of resource for the second consultation on MLP (Autumn 2013)	
Commentary:	A small resource area intersected by a railway line.
Crude estimate of resource:	Area: 14ha x average depth: 2m / 2 Estimated resource volume: 140,000m ³ Estimated resource tonnage (at 2 t/m³): 280,000 tonnes
Conclusion:	Not significant: Small deposit with less than 300,000m ³ . Not for consideration in defining areas of search.
Assessment of resource for the Third Stage consultation on MLP (Spring 2015)	
Revised estimate of resource:	Area: 14ha x average depth: 2m / 2 Estimated resource volume: 140,000m ³ Estimated resource tonnage (at 1.65 t/m³): 231,000 tonnes
Conclusion:	Not significant.
Assessment of resource for the Fourth Stage consultation on MLP (August 2018)	
Not reassessed due to resource not being classified as Key or Significant in the Third Stage Consultation	

Overview	
Resource number:	15/13
Resource name:	Ufnell Bridge
Resource area:	32ha
Resource depth:	Estimated 3.1m
Location	
OS sheet reference:	SO 94 NW
National grid ref:	393092, 246910
Resource description:	
Resource description:	<p>2nd terrace (Wasperton) and 3rd terrace (New Inn) sand and gravel (approximately two thirds 2nd terrace, one third 3rd terrace). The BGS memoir states that there is a suite of five terraces in the valley of the Bow Brook. The Bow Brook is part of the River Avon drainage basin and the two sets of terraces (Bow Brook and Avon) are correlated. The deposits are all predominantly pebbly sand, the pebbles mainly being derived from the Kidderminster formation, together with a few local Penarth group and Jurassic lithologies. All of the Bow Brook terrace deposits are estimated to be up to 2m thick.</p> <p>However, more detailed local information is available for the 2nd terrace. One borehole at Defford, to the south west of this resource area, found 3.7m of sand and gravel beneath 1.2m of overburden. In gravel pits in the 2nd terrace at Lower Moor, to the east of this resource area, from 2.4-4.6m of sand with gravelly layers were exposed.</p> <p>(Estimated resource depth based on mean average of a) BGS memoir estimate of 2m, b) borehole at Defford 3.7m and c) Median average of gravel pits at Lower Moor (2.4m to 4.6m = 3.5m) = 3.1m)</p>
Assessment of resource for the second consultation on MLP (Autumn 2013)	
Commentary:	A small resource area intersected by a road but with no other built development in the resource area.
Crude estimate of resource:	<p>Area: 32ha x average depth: 3.1m / 2</p> <p>Estimated resource volume: 496,000m³</p> <p>Estimated resource tonnage (at 2 t/m³): 992,000 tonnes</p>

Conclusion:	Significant. Consider in defining areas of search.
Assessment of resource for the Third Stage consultation on MLP (Spring 2015)	
Revised estimate of resource:	Area: 32ha x average depth: 3.1m / 2 Estimated resource volume: 496,000m ³ Estimated resource tonnage (at 1.65 t/m³): 818,400 tonnes
Conclusion:	Significant.
Assessment of resource for the Fourth Stage consultation on MLP (August 2018)	
Resource area:	32 ha
Resource depth:	Estimated 3.1m
Revised estimate of resource:	Area: 32ha x average depth: 3.1m / 2 Estimated resource volume: 496,000m ³ Estimated resource tonnage (at 1.65 t/m³): 818,400 tonnes
Conclusion:	Significant resource

Overview	
Resource number:	15/14
Resource name:	Broughton Farm
Resource area:	13ha
Resource depth:	Estimated 3.1m
Location	
OS sheet reference:	SO 94 NW
National grid ref:	393685, 247636
Resource description:	
Resource description:	<p>2nd terrace (Wasperton) sand and gravel. The BGS memoir states that there is a suite of five terraces in the valley of the Bow Brook. The Bow Brook is part of the River Avon drainage basin and the two sets of terraces (Bow Brook and Avon) are correlated. The deposits are all predominantly pebbly sand, the pebbles mainly being derived from the Kidderminster formation, together with a few local Penarth group and Jurassic lithologies. All of the Bow Brook terrace deposits are estimated to be up to 2m thick.</p> <p>However, more detailed local information is available for the 2nd terrace. One borehole at Defford, to the south west of this resource area, found 3.7m of sand and gravel beneath 1.2m of overburden. In gravel pits in the 2nd terrace at Lower Moor, to the east of this resource area, from 2.4-4.6m of sand with gravelly layers were exposed.</p> <p>(Estimated resource depth based on mean average of a) BGS memoir estimate of 2m, b) borehole at Defford 3.7m and c) Median average of gravel pits at Lower Moor (2.4m to 4.6m = 3.5m) = 3.1m)</p>
Assessment of resource for the second consultation on MLP (Autumn 2013)	
Commentary:	A small deposit with no built development in the resource area.
Crude estimate of resource:	<p>Area: 13ha x average depth: 3.1m / 2</p> <p>Estimated resource: 201,500m³</p> <p>Estimated resource tonnage (at 2 t/m³): 403,000 tonnes</p>
Conclusion:	<p>Not significant: Small deposit with less than 300,000m³.</p> <p>Not for consideration in defining areas of search.</p>

Assessment of resource for the Third Stage consultation on MLP (Spring 2015)	
Revised estimate of resource:	Area: 13ha x average depth: 3.1m / 2 Estimated resource: 201,500m ³ Estimated resource tonnage (at 1.65 t/m³): 332,475 tonnes
Conclusion:	Not significant.
Assessment of resource for the Fourth Stage consultation on MLP (August 2018)	
Not reassessed due to resource not being classified as Key or Significant in the Third Stage Consultation	