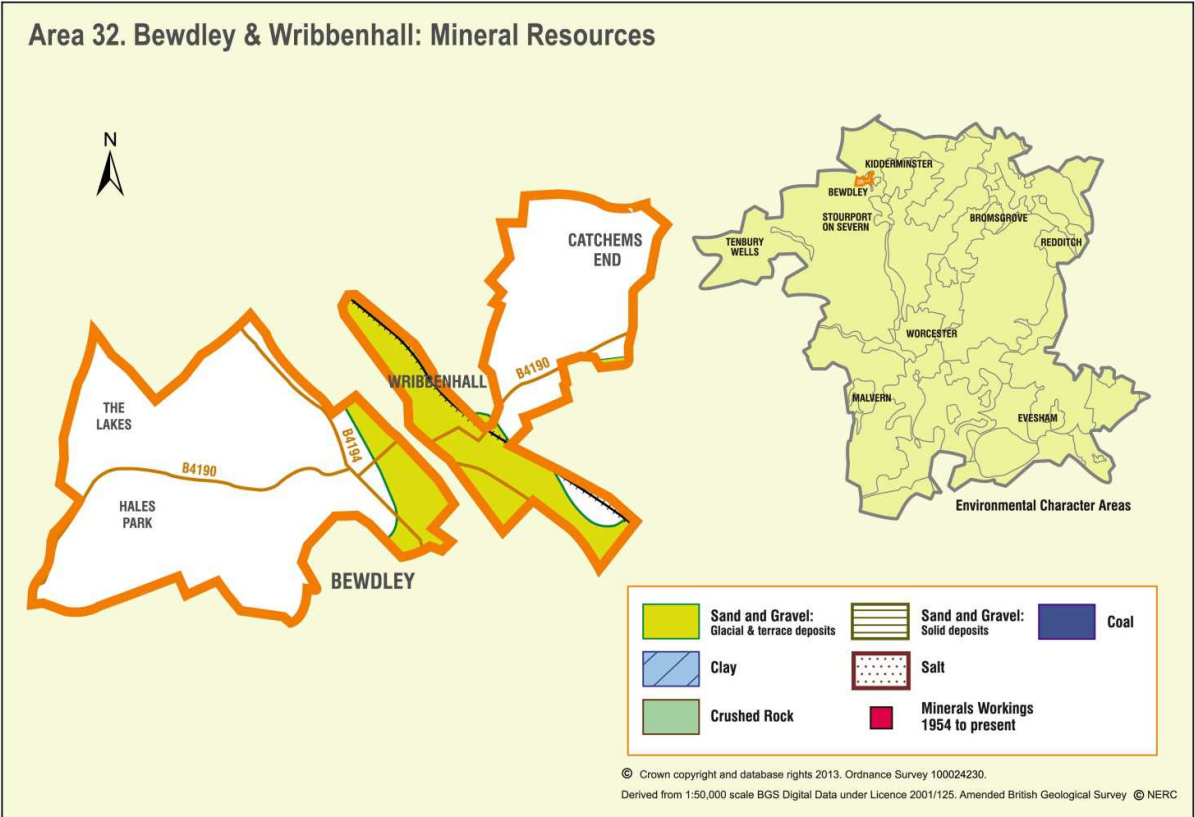


Appendix 32: Analysis of aggregate resources in Area 32: Bewdley and Wribbenhall



ECA Summary for the Fourth Stage consultation on MLP (Winter 2018):

Sand and gravel
 There are 3 resource areas identified for sand and gravel in Bewdley and Wribbenhall Area:

- Not significant: 1
- Compromised: 2

Crushed rock
 There are no resource areas identified in Bewdley and Wribbenhall Area for crushed rock.

Non-aggregates
 BGS data indicates that there are no non-aggregate mineral deposits in Bewdley and Wribbenhall ECA.

Overview of resource assessment for ECA 32

Sand and gravel resource areas:

| Resource number* | Second Stage Consultation | | Third Stage Consultation | | Fourth Stage Consultation | | |
|------------------|--|-----------------|--|-----------------|---|--|--------|
| | Original estimated resource tonnage (2 tonnes/m ³) | Significance | Revised estimate of resource tonnage (1.65 tonnes/m ³) | Significance | New resource number (where resource has been split) | Revised estimate of resource tonnage (1.65 tonnes/m ³) | Result |
| 32/1 | Depth unknown | Compromised | Depth unknown | Compromised | Not reassessed | | |
| 32/2 | Depth unknown | Compromised | Depth unknown | Compromised | | | |
| 32/3 | Depth unknown | Not significant | Depth unknown | Not significant | | | |

| | | |
|---|--|--|
| Overview | | |
| Resource number: | 32/1 | |
| Resource name: | Bewdley west bank | |
| Resource area: | 15 ha | |
| Resource depth: | Not known. | |
| Location | | |
| OS sheet reference: | SO 77 NE, SO 77 SE | |
| National grid ref: | 378547, 275446 | |
| Resource description: | | |
| Resource description: | A 1 st terrace (Powerhouse) sand and gravel deposit. There is no information on thicknesses in the BGS memoirs. | |
| Assessment of resource for the second consultation on MLP (Autumn 2013) | | |
| Commentary: | A small resource area overlain by the settlement of Bewdley, with only a small area less than 200m wide remaining at the northern end. | |
| Crude estimate of resource: | Depth not known. | |
| Conclusion: | Compromised by development. | |
| Assessment of resource for the Third Stage consultation on MLP (Spring 2015) | | |
| Revised estimate of resource: | No change to the assessment. | |
| Conclusion: | Compromised by development. | |
| Assessment of resource for the Fourth Stage consultation on MLP (August 2018) | | |
| Not reassessed due to resource not being classified as Key or Significant in the Third Stage Consultation | | |

| | |
|---|--|
| Overview | |
| Resource number: | 32/2 |
| Resource name: | Wribbenhall |
| Resource area: | 22 ha |
| Resource depth: | Not known. |
| Location | |
| OS sheet reference: | SO 77 NE, SO 77 SE |
| National grid ref: | 379086, 275314 |
| | |
| Resource description: | |
| Resource description: | 1 st terrace (Powerhouse) sand and gravel. There is no information on thicknesses in the BGS memoirs. |
| Assessment of resource for the second consultation on MLP (Autumn 2013) | |
| Commentary: | A small resource area overlain by the settlements of Bewdley and Wribbenhall. |
| Crude estimate of resource: | Depth not known. |
| Conclusion: | Compromised by development. |
| Assessment of resource for the Third Stage consultation on MLP (Spring 2015) | |
| Revised estimate of resource: | No change to the assessment. |
| Conclusion: | Compromised by development. |
| Assessment of resource for the Fourth Stage consultation on MLP (August 2018) | |
| Not reassessed due to resource not being classified as Key or Significant in the Third Stage Consultation | |

| | | |
|---|--|--|
| Overview | | |
| Resource number: | 32/3 | |
| Resource name: | Bewdley East Bank | |
| Resource area: | 19ha | |
| Resource depth: | Not known | |
| Location | | |
| OS sheet reference: | SO 77 NE | |
| National grid ref: | 378758, 276000 | |
| Resource description: | | |
| Resource description: | Kidderminster formation solid sand. Kidderminster formation overlying lower mottled sandstone (Wildmoor formation). The base of the Kidderminster formation is exposed in the lane at Crundalls Farm and along the railway cutting. Southwards from the farm the formation continues as a ridge extending nearly to the main road at Wribbenhall. No information on depth is given in the BGS memoirs. | |
| Assessment of resource for the second consultation on MLP (Autumn 2013) | | |
| Commentary: | A small resource area with some built development on the periphery. | |
| Crude estimate of resource: | Depth not known | |
| Conclusion: | Not significant: Small deposit with no information to estimate the resource in this area. Not for consideration in defining areas of search. | |
| Assessment of resource for the Third Stage consultation on MLP (Spring 2015) | | |
| Revised estimate of resource: | No change to the assessment. | |
| Conclusion: | Not significant. | |
| Assessment of resource for the Fourth Stage consultation on MLP (August 2018) | | |
| Not reassessed due to resource not being classified as Key or Significant in the Third Stage Consultation | | |