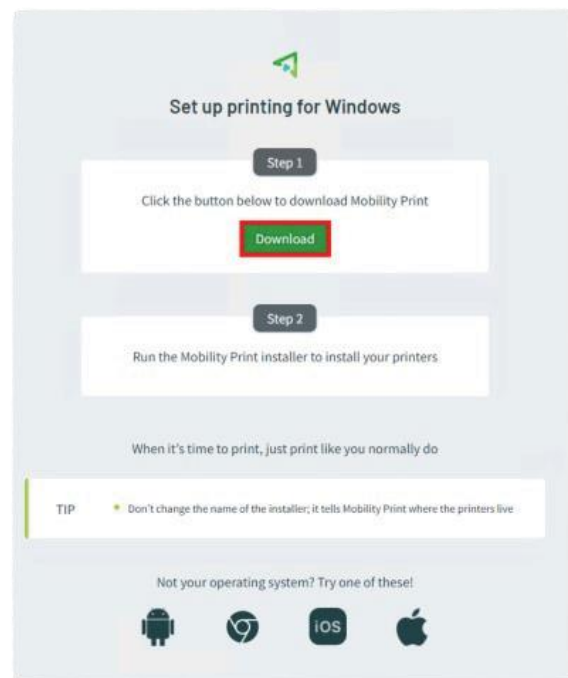
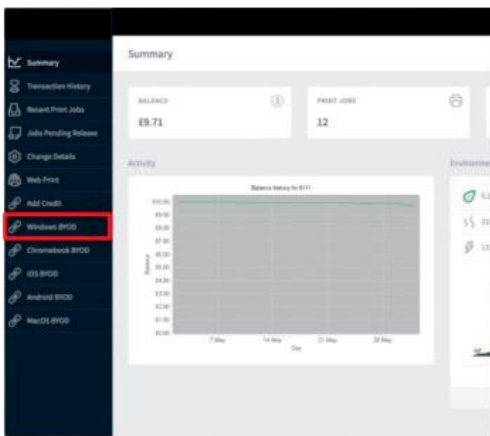


Print Set-up Guide

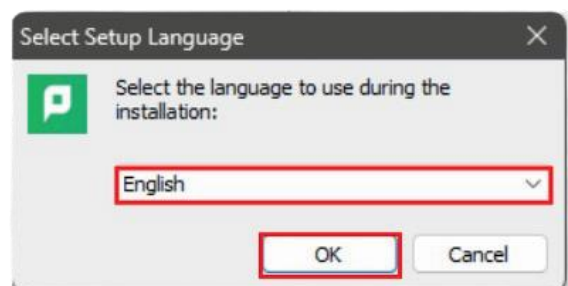
Windows Devices

To set up print your way on your Windows device please follow the instructions below:

1. When you're at your local library, connect to the local library wifi network.
2. Access the setup link by entering <https://libprint.worcestershire.gov.uk:9164/setup> into your browser or by scanning the QR Code:
3. On the home page, click on Windows BYOD from the option on the left-hand side then click download.



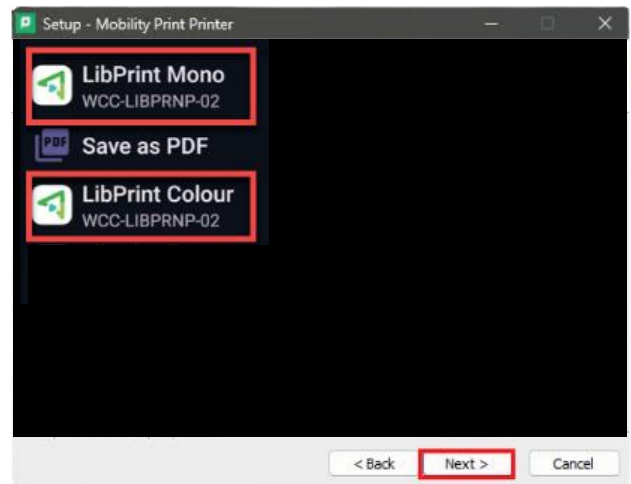
4. Select **English** as the language the click **OK**.



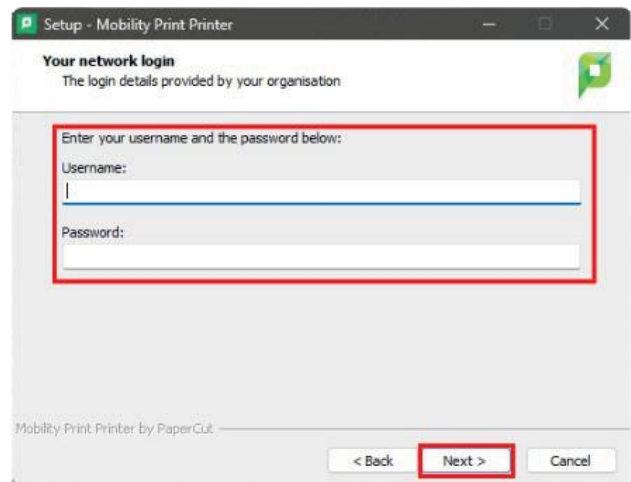
Print Set-up Guide

Windows Devices

5. Select the LibPrint Mono or LibPrint Colour from the list then click Next.



6. Enter your library login credentials then click Next



7. Once the set-up Wizard has completed the install, click Finish.



Finally, click **Print** in the application you want to print from, then select **LibPrint Mono** or **LibPrint Colour** from the list.