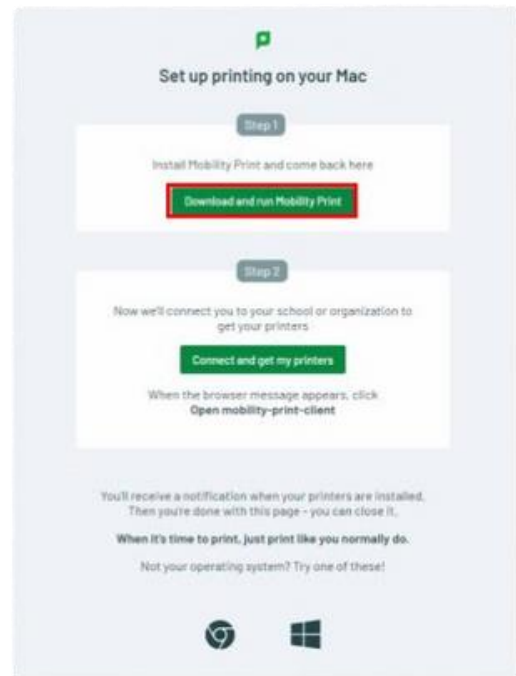
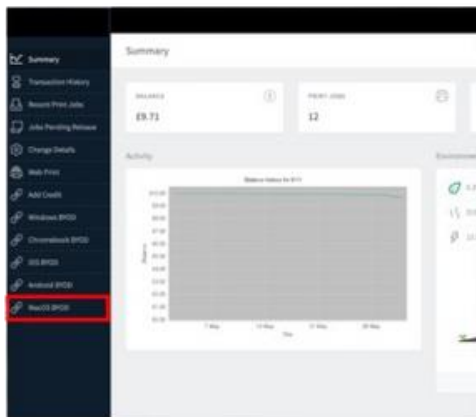


# Print Set-up Guide

## macOS Devices

To set up print your way on your macOS device please follow the instructions below:

1. When you're at your local library, connect to the local library wifi network.
2. Access the setup link by entering <https://libprint.worcestershire.gov.uk:9164/setup> into your browser or by scanning the QR Code:
3. On the home page, click on macOS BYOD from the option on the left-hand side then click download and run Mobility Print.



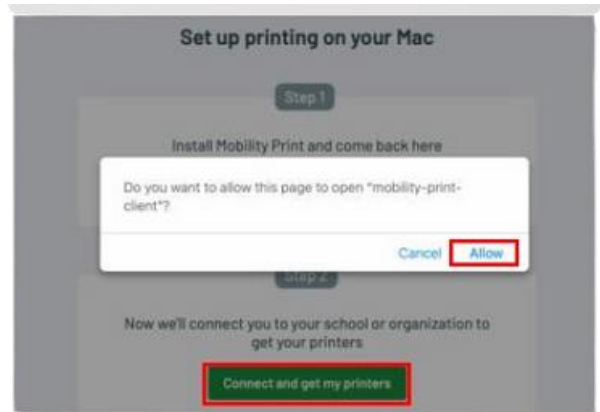
4. Once downloaded, Double-Click the PaperCut Mobility Print Client.pkg to run and install the client.



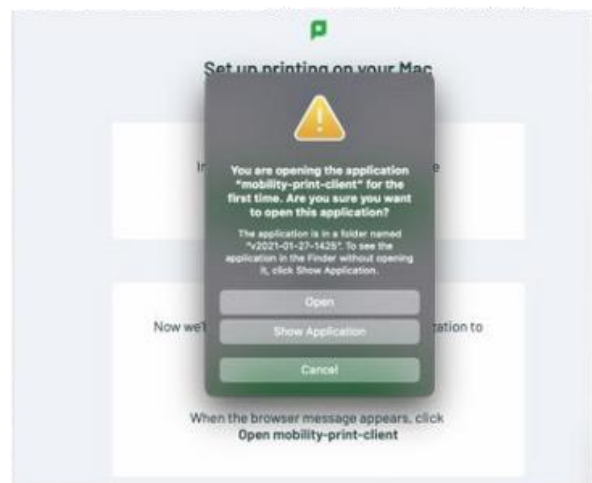
# Print Set-up Guide

## macOS Devices

**5.** After installing, return to the setup page, where you'll see a popup asking you to open the PaperCut Mobility Print client. Click Allow to open the client. Please Note: If you don't see the popup, click Connect and get my printers.



**6.** Confirm that you're ok to open the Mobility Print client by clicking Open.



**7.** The client will then download and install the printer(S) onto your Mac.



**Printing – Press Cmd + P. After you select the Mobility Print printer you want to print to, you'll be asked to enter your library login credentials. Then your print job will be sent.**